

SYMPTOMS

Generally asymptomatic until advanced.

SIGNS

NaFl stain at 3&9, area under stain becomes opaque and raised as advances.

CAUSE

Combination of lens fit (usually immobile), tear film quality and reduced lid wipe effect adjacent to lens.

ACTION

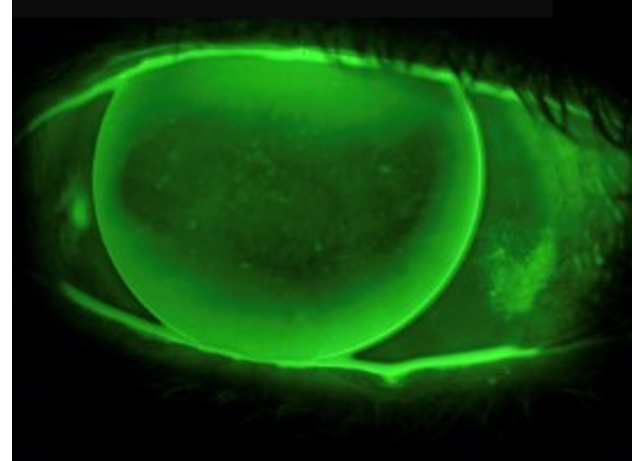
Reduce lens diameter by 1.0 or 1.5mm.

Improve lens mobility. May not be possible if high Rx or keratoconic fit. See *Low Riding Lens*

Refit with soft lenses / ortho-k night lenses.

Piggy-back with low powered daily disp for 3 weeks. May be needed ongoing piggy back wear if fit can't be altered to prevent 3&9 returning.

9.80mm aspheric causing 3&9 staining



Refitted with 8.30mm multicurve

